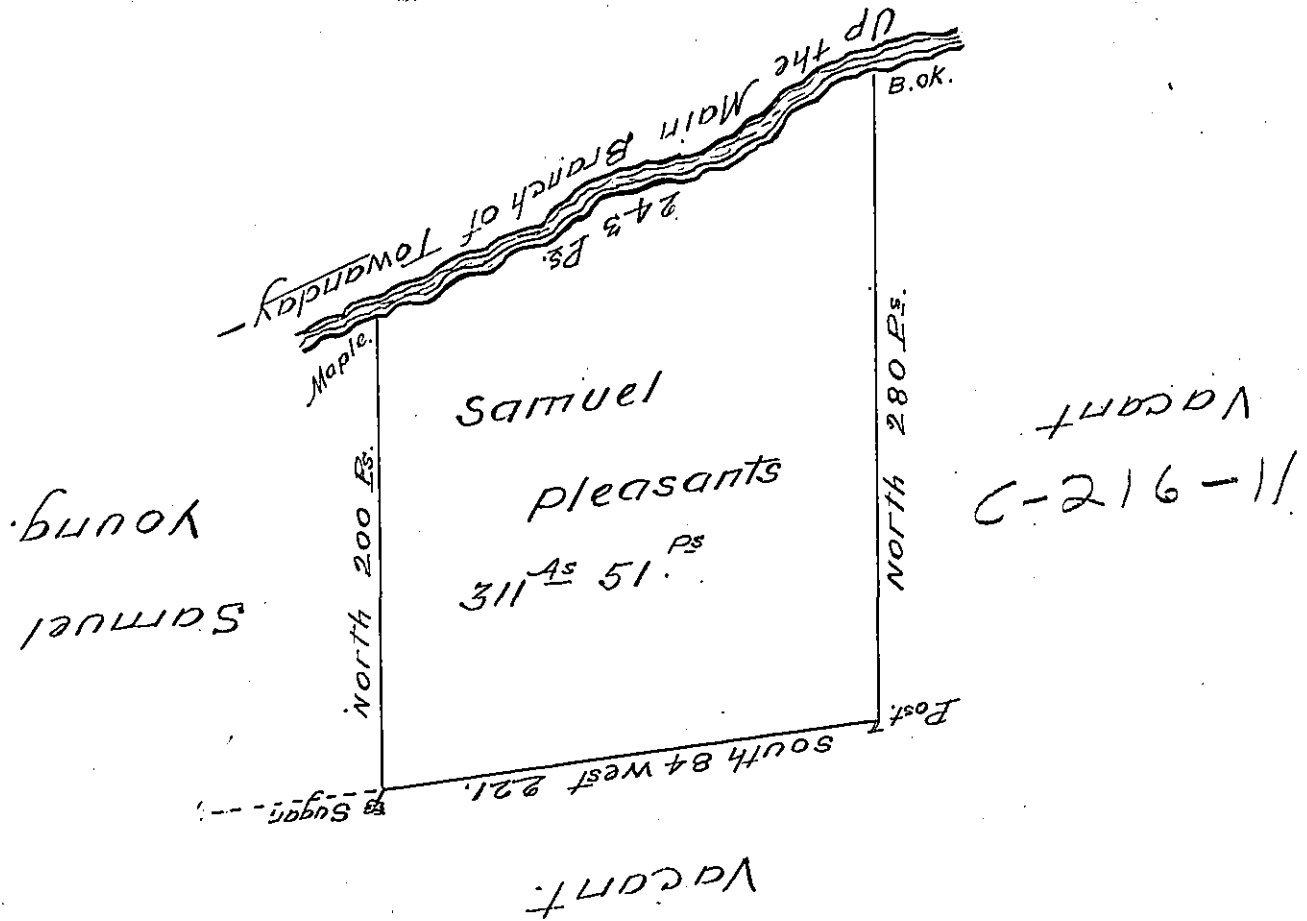


H-79-262



Draught of a Tract of Land called Madagascar situate on Towanday Creek and adjoining Land surveyed for Samuel Young in the County of Luzerne containing Three hundred and Eleven Acres and Fifty one Perches and the usual Allowance for Roads. Surveyed for Samuel Pleasants the 26th Day of October 1803 in Pursuance of a Warrant dated the 25th Day of June 1773

To Samuel Cochran Esq^r }
 Surveyor General. }

Tho^s. Sambourn
 Dy. S^r

IN TESTIMONY that the above is a copy of the original remaining on file in the Department of Internal Affairs of Pennsylvania, made conformably to an Act of Assembly approved the 16th day of February, 1833, I have hereunto set my Hand and caused the Seal of said Department to be affixed at Harrisburg, this fourth day of March 1908.

Henry Howard
 Secretary of Internal Affairs.